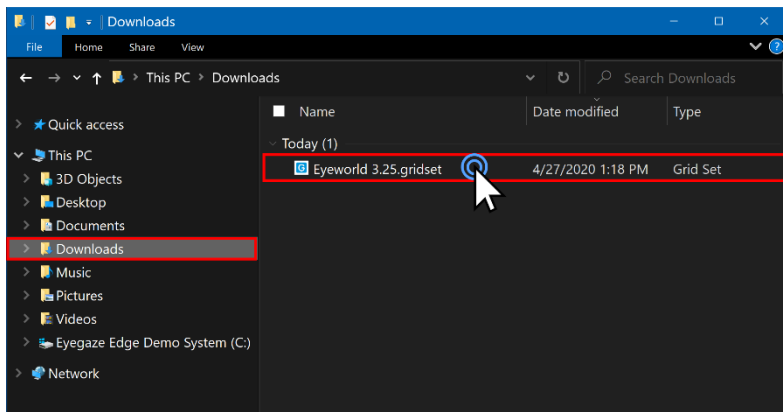


Eyeworld Setup

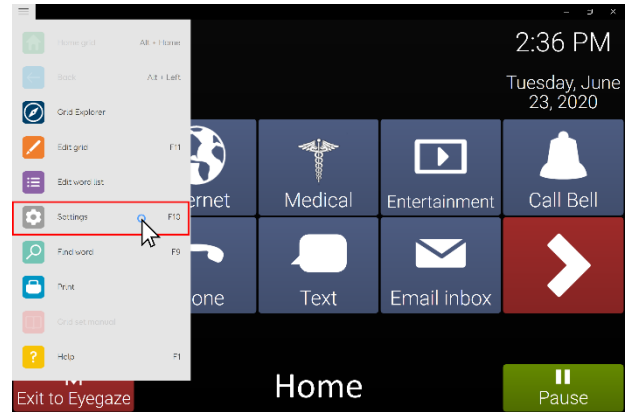
Step 1:

Download the .gridset file onto your demo system. Then double click on it to load it into Grid. (Grid will open on its own)



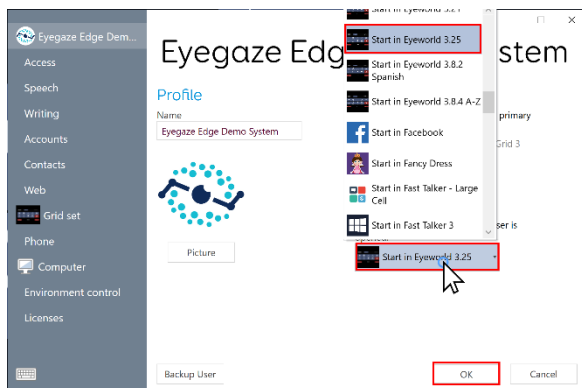
Step 2:

Once in Grid, select the menu icon in the top left corner of the screen. Then select "Settings".



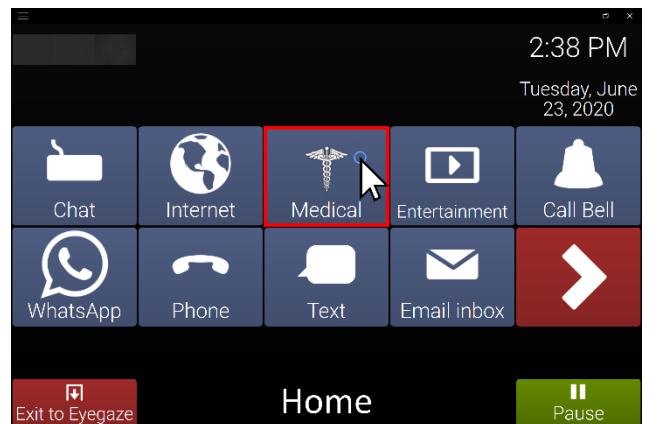
Step 3:

Under "Startup" select the drop down tab and make sure "Start in Eyeworld (latest update)" is selected. Select "OK".



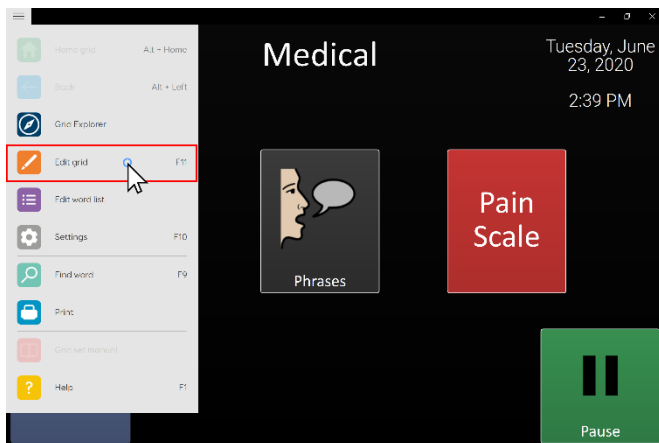
Step 4:

Select "Eyevoice". (This will open the Eyevoice gridset)



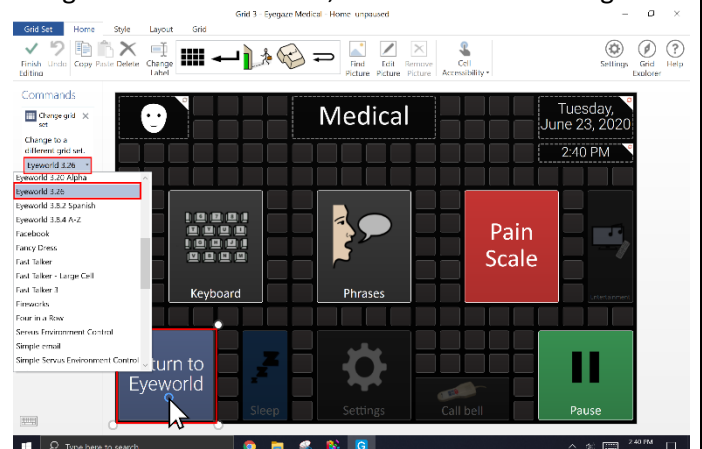
Step 5:

Select the menu icon in the top left of the screen. Select "Edit grid".



Step 6:

Select the "Eye World" button. Then ensure "Eyeworld (latest update)" is selected under "Change to a different grid set". Once finished, select "finished Editing".



You have now successfully setup your Eyeworld Update!